

ETA Radial Insertion Machine S3020



Introduce:

The s-3020 offers consistently high throughput regardless of component type, with single-, dual-, triple-, and quad-span insertion variants. Lead span capability up to 10mm virtually eliminates tedious manual assembly requirements to improve throughput, product quality and output per floor space, while reducing associated labor costs and time requirements to provide greater returns. The s-3020 delivers exceptional flexibility with over 100 available inputs on the expandable sequencer. An intuitive operator interface that is common with other Generation s-3020 equipment offers easy operation, diagnostics, data management and a graphical product editor.

18000 CPH

Highest reliability in the industry (1000 ppm)

Component replenishment without machine stoppage

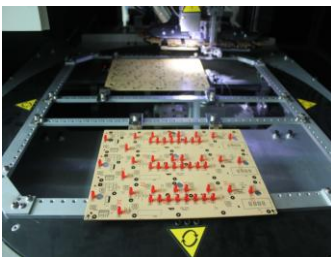
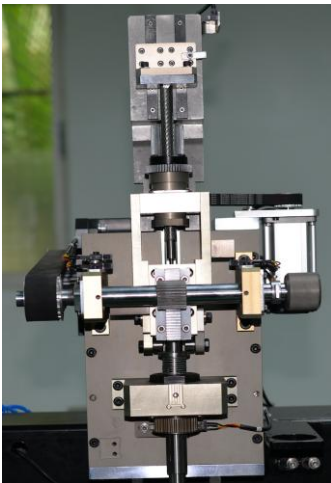
Manual Load or Automatic PCB Load/Unload

Configurable sequencer (In-Line or Straight-Back)

Multiple clinch options

Component Verifier

Simple-to-use operator environment with graphical user interface



-Highest Throughput

- 18,000 CPH Spec Speed

-Strong Machine Flexibility

- Expandable from 20 inputs up to 100 inputs
- Inserts at 1 degree increments up to 360 degrees
- Inward clinch option to increase bottom side density

-Lowers Cost of Ownership

- Low Energy costs.
- Minimal preventative maintenance required.

- Easy to Use User Interface

- Easy operation, use Excel program and USB input.
- Off-line programming available
- Components available: Capacitors (electrolytic, ceramic, box, and film), transistors, diodes, LEDs, connectors, tact switches, coils, potentiometers, lamps, fuses, etc

Consistent throughput, regardless of component type or lead span Offers a stand alone machine without a pass-through PCB conveyor. Allows the work board holder to accept up to 4 window's Delivers a PCBA transfer time of zero

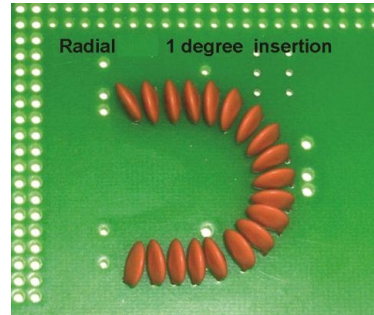
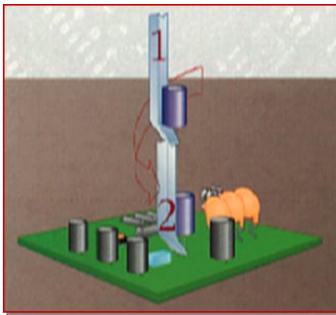


Tooling to accommodate a variety of applications-field reconfigurable

Single Span: 2.5mm

Dual Span: 2.5mm/5.0mm

Triple Span: 2.5mm/5.0mm/7.5mm

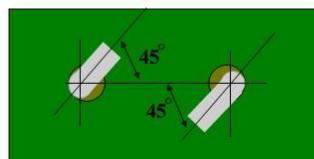
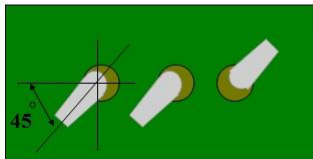


360 Degrees Insertion Angel

Radial: Insertion heads are servo-driver for precise and rapid component insertion. The insertion tooling may be rotated from 0 degree to 360 degrees in 1 degree increments.

N

INWARD



BOTTOM OF PCB

2.5mm Span Standard Configuration

Achieves High Density for tight LED & small applications.

2.5mm span guide jaw with minimal width.

- Inward clinch option to increase bottom side density

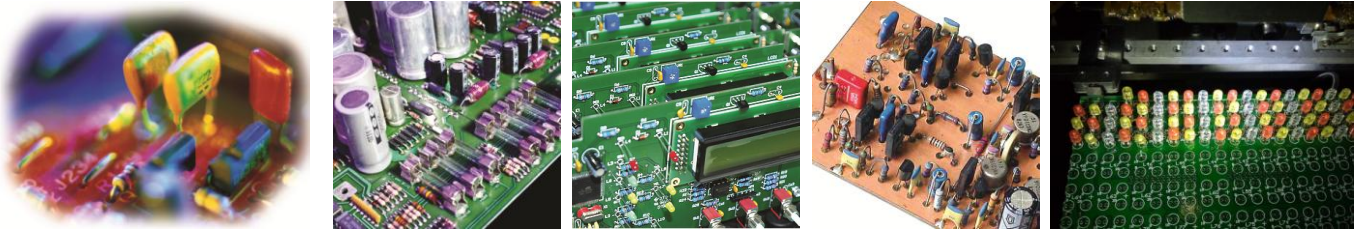
- Prevents shorting during wave soldering.

Special asymmetric angles are also available on request.



We can handle bulk components automatically

Application:



Specification:

Model	S3020
Actual Speed	18000 CPH
Feeders	20
Accuracy	±0.05mm
Plug-in Angle	0-360°
Lead Spacing	2.5mm/ 3.0mm/ 3.5mm / 5.0mm/ 7.5mm
Transport Speed	Max 1200mm/s
Component Diameter	Max 10mm
Component Height	20mm
PCB Size	50*50-450*450mm
Cutting Lead Length	1.2-2.2mm
Cutting Lead Angle	5-35°
Air Pressure	4.5~6Kg/cm2
Power Supply	AC:220±10%,50/60HZ,2Kw
Dimension(mm)	L1700*W1500*H1000
Weight	Approx:2100kg

* The data is obtained under ambient temperature of 25 °C and humidity of 60%

Customer:



**Thanks for choosing ETA.
ETA looks forward to win-win cooperation.**